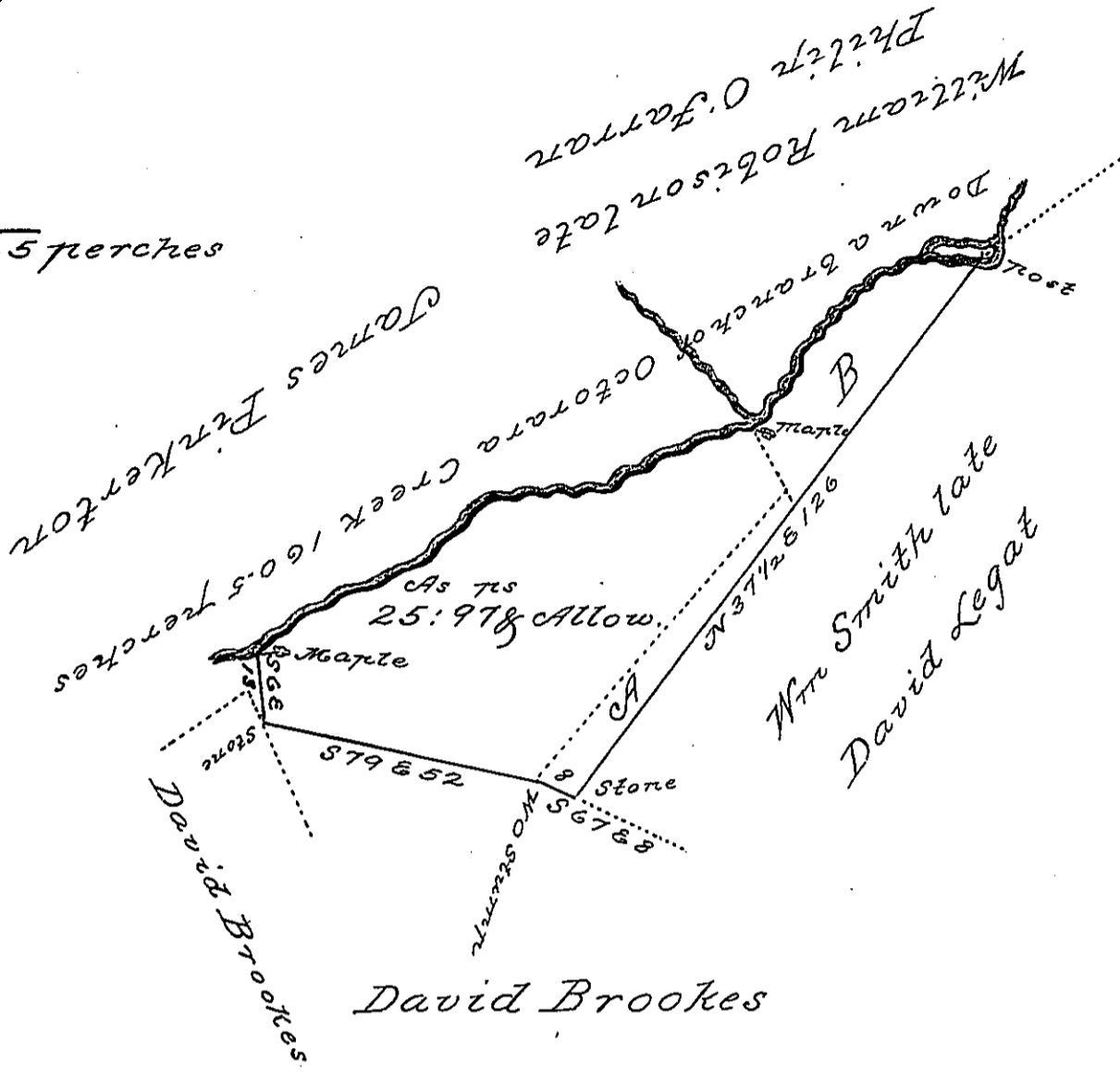


Courses &c down ye Creek

- S 82 7/16
- S 52 7/11.5
- S 42 7/28
- S 73 7/13
- S 66 7/20
- S 88 7/17
- S 50 7/18
- S 66 7/27
- S 46 7/10

160.5 perches



The above is a draft of a tract of land which was Surveyed on the 3^d day of April 1744 by Samuel Lightfoot Deputy Surveyor to Robert Boyle on his Warrant dated the 14th day of March 1743: Situate in West Fallowfield township Chester County; and Resurveyed on the 20th day of October 1804 with some additions at A and B. containing Twenty five Acres and nine-ty seven perches & allowance of six per Cent for roads &c

Resurveyed by
Janⁿ Hindman D^r

To Samuel Cochran Esqr }
 Surveyor General

IN TESTIMONY that the above is a copy of the original remaining on file in the Department of Internal Affairs of Pennsylvania, made conformably to an Act of Assembly approved the 16th day of February, 1833, I have hereunto set my Hand and caused the Seal of said Department to be affixed at Harrisburg, this

second day of February 1897

James W. Patton
 Secretary of Internal Affairs.